

THE GRAMERCY

COMPASS POINTE

8563 SAFFLOWER WAY | LOT 14

2,257 SQ FT. | 3 BEDROOMS | 3 BATHROOMS | BONUS ROOM

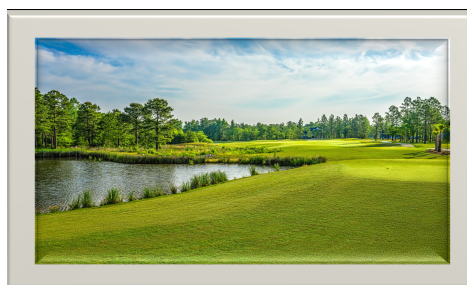
SOLD

Available for viewing & tours through September 2022



FEATURES YOU'LL LOVE *in this home:*

- ♥ Open, Airy Floorplan
- ♥ Formal Study with coffer ceiling detail
- ♥ Expansive walk-in closet in owners suite
- ♥ Spacious screen porch off great room
- ♥ Bonus room with 3/4 bath



for a complete list of available features, please contact:

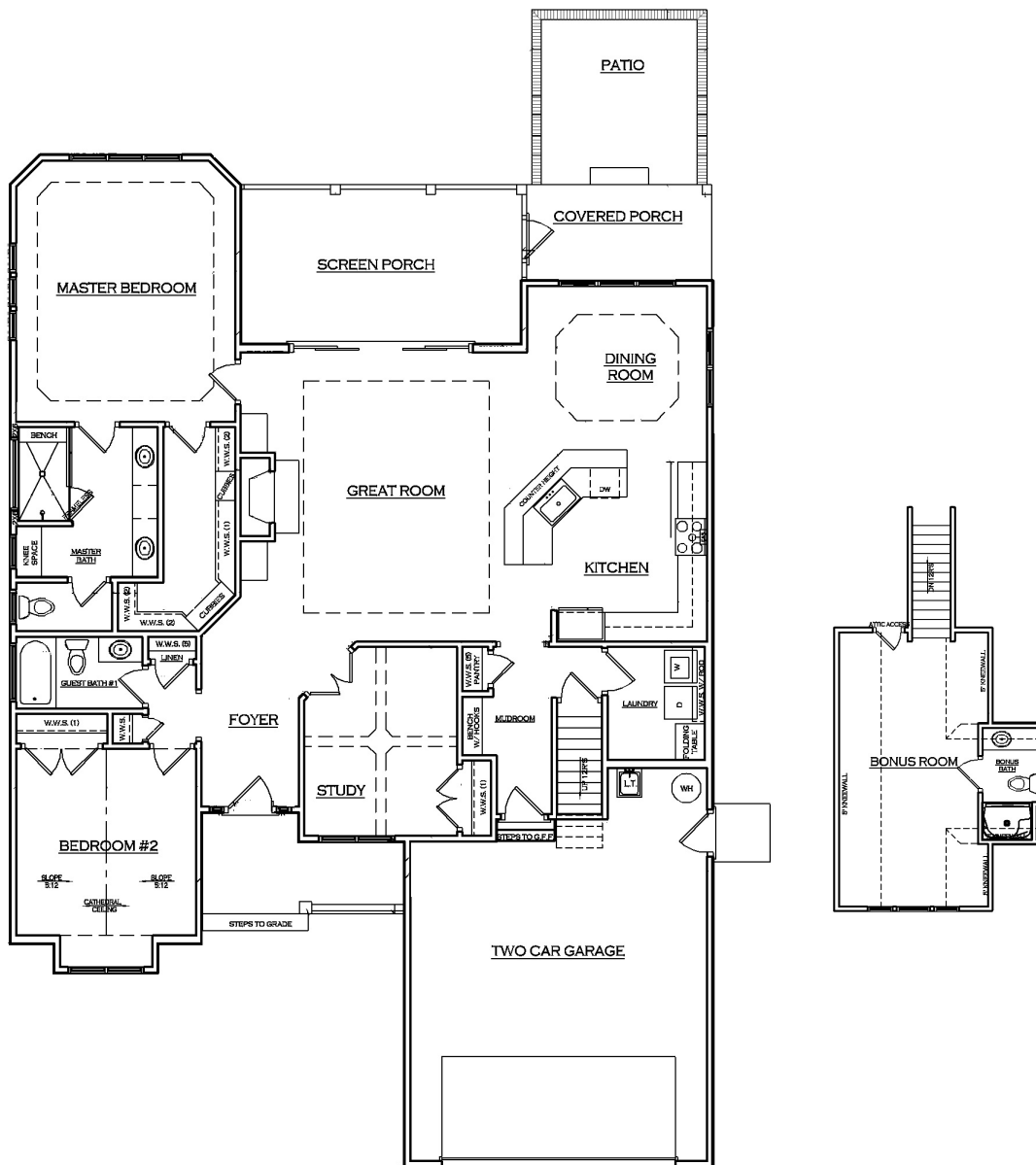
LUCAS WRIGHT | 919.280.3965 | lwright@billclarkhomes.com

PAUL CORCORAN | 502.445.5347 | pcorcoran@billclarkhomes.com

* Rendering for artistic purposes only, price is based on individual homesite and neighborhood requirements, subject to change without notice. Effective 3.1.21

L

WWW.LEGACYHOMESBYBILLCLARK.COM



BASE PRICE OF THIS GRAMERCY: **\$387,000** - *with Bonus Room Suite*

FEATURES YOU'LL LOVE INCLUDED IN THIS HOME:

- ♡ Built-in bookshelves and cabinets in great room
- ♡ White wood shelving in pantry and all closets
- ♡ Built-in bench with hooks in mudroom with bead board detail
- ♡ Upgraded granite countertop in kitchen
- ♡ Built-in folding table in laundry room
- ♡ Utility sink in garage

for a complete list of available features, please contact:

LUCAS WRIGHT | 919.280.3965 | lwright@billclarkhomes.com
 PAUL CORCORAN | 502.445.5347 | pcorcoran@billclarkhomes.com


WWW.LEGACYHOMESBYBILLCLARK.COM